



# DMC-14/-20-G2 (Second Generation) Optional Accessories & Replacement Parts

Rack-Mount Version



Free-Standing Version



**CHILLER MODULE OPTIONS**  
**K-O Concepts Model DMC-G2 (-14/-20)**

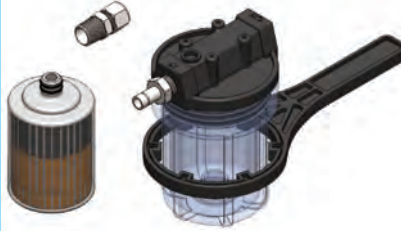
**Optional Accessories**

Optional Coolant Filter Assembly  
 Model: FILT-6-1/2



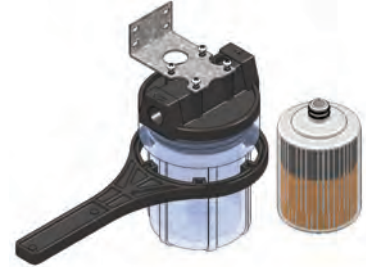
In-line filter cartridge to filter process water and protect water pump. Filter has molded 3/8" FPT fittings at each end and (qty 2) 3/8" MPT x 1/2" Tube Push-to-Connect fittings. Filter limited to 1-1/2 GPM max flow.

Optional DI Assembly  
 Model: DI-5-1/2-SS-1420



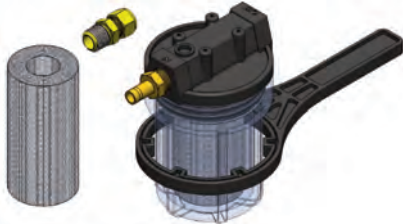
Option includes a nickel brazed plate heat exchanger, rear-panel-mounted DI assembly, upgraded stainless steel water fittings, and cartridge style water filter. Includes service wrench.

Optional DI Assembly w/ Bracket  
 Model: DI-5-1/2-BRKT-1420



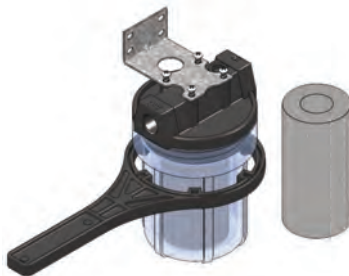
Same as DI-5-1/2-SS with optional bracket. Includes (qty 2) 1/2" Tube Push-to-Connect fittings and service wrench.

Optional Coolant Filter Assembly  
 Model: FILT-5-1/2-B



Canister style filter cartridge to filter process water and protect water pump. This option includes a back-panel-mounted particle filter assembly comprised of a canister style filter w/ fittings for installation onto chiller back panel, and a spare replacement filter element (P5-478). Includes service wrench.

Optional Coolant Filter Assembly  
 Model: FILT-5-1/2-BRKT



Same as FILT-5-1/2 with optional bracket. Includes (qty 2) 1/2" Tube Push-to-Connect fittings and service wrench.

Optional DI Assembly w/o Cartridge  
 Model: DI-1420-SS

Same as DI-5-1/2-SS less ion cartridge assembly.

## CHILLER MODULE OPTIONS

### K-O Concepts Model DMC-G2 (-14/-20)

#### Optional Accessories

Optional 1 Quart of HD Glycol  
Model: IPG-(HD)-1qt.



Commonly called HD IPG. One quart bottle. DOWFROST HD fluid features a higher maximum operating temperature, higher reserve alkalinity and greater thermal stability for longer fluid life. Extra-strength corrosion inhibitors in DOWFROST HD fluid are formulated for high temperature use, resulting in reduced maintenance and longer inhibitor life in most applications.

Optional 1 Gallon of HD Glycol  
Model: IPG-(HD)-1gal.



Commonly called HD IPG. One gallon bottle. DOWFROST HD fluid features a higher maximum operating temperature, higher reserve alkalinity and greater thermal stability for longer fluid life. Extra-strength corrosion inhibitors in DOWFROST HD fluid are formulated for high temperature use, resulting in reduced maintenance and longer inhibitor life in most applications.

Optional 1 Gallon of Mixed HD Glycol  
Model: IPG-(HD)-30/70-1gal.



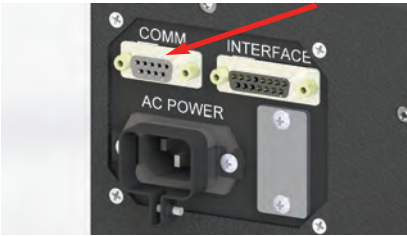
Commonly called HD IPG. One gallon bottle. Pre-mixed coolant with 30% IPG & 70% deionized water. DOWFROST HD fluid features a higher maximum operating temperature, higher reserve alkalinity and greater thermal stability for longer fluid life. Extra-strength corrosion inhibitors in DOWFROST HD fluid are formulated for high temperature use, resulting in reduced maintenance and longer inhibitor life in most applications.

# CHILLER MODULE OPTIONS

## K-O Concepts Model DMC-G2 (-14/-20)

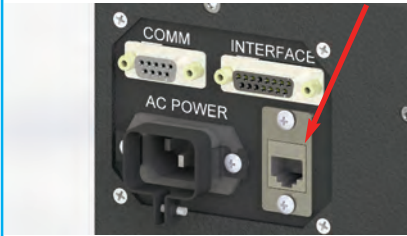
### Optional Accessories

Optional Modbus RTU Communication  
Model: 485 or 232-MODBUS RTU



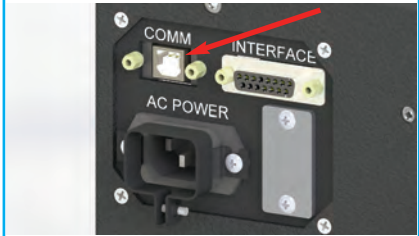
Option provides communications via the digital temperature controller. Modbus RTU / RS-485 or 232 format allows for communications via external computer or network. A Modbus Gateway or Modbus RTU communications card is required for interface.

Optional Modbus TCP Communication  
Model: TCP



Option provides communications via the digital temperature controller. Modbus TCP / Ethernet format allows for communications via network computer. This format is supplied via rear panel CAT 6 female port.

Optional USB 2.0 Communication  
Model: USB2.0



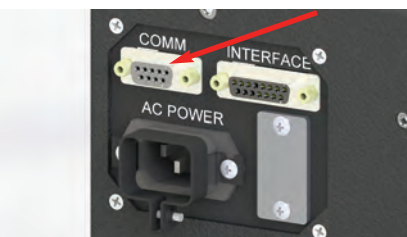
Option provides communication via the digital temperature controller. USB 2.0 format allows communications via local computer. This format is supplied via rear-panel USB B female connector.

Optional RS-232 Communication  
Model: RS-232



Option provides communications via the digital temperature controller. EIA-232 format allows for communications via local computer. EIA-485 is output from the temperature controller & converted via external cable / module to a RS-232 format.

Optional Profibus DP Communication  
Model: PROFIBUS DP



Option provides communications via the digital temperature controller. Profibus DP format allows for communications via external computer or network. A Profibus Gateway or Profibus communications card is required for interface.

Optional Device Net Communication  
Model: DEVICE NET



Option provides communications via the digital temperature controller. Device Net format allows for communications via external computer or network. A Device Net Gateway or Device Net communications card is required for interface. Cable 3082A supplied and routed to optional communications panel. Customer must supply connector.

**CHILLER MODULE OPTIONS**  
**K-O Concepts Model DMC-G2 (-14/-20)**

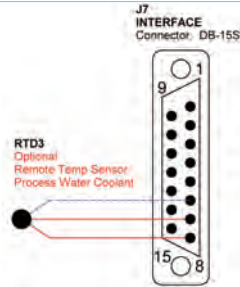
**Optional Accessories**

Optional End User Board  
 Model: EU-PCB-A or S



Front-panel viewed PCB reports status of interface signals via LED's and audible alarm. PCB reports status of coolant flow, coolant level, compressor alarm, and coolant temperature alarm via dual color LED's. Audible alarm sounds on any or all fault signals. Order option "A" for alarms only or option "S" for alarms and shut down

Optional RTD Output  
 Model: TS-RTD



Sensor is 100Ω, 3 wire platinum RTD & located in coolant tank. Connector output located on back panel w/ mating connector provided. Sensor provides redundant sensing of coolant temperature.

Optional Remote Energize  
 Model: SSR-REMOTE-V



Option allows user to power chiller ON or OFF via internally installed SSR. Customer supplies remote 3-32 VDC input to energize chiller.

Optional Remote Energize  
 Model: SSR-REMOTE-C



Optional SSR-Remote-C provides user independent remote energize capability for "PUMP" & "COOL" switch functions via two contact closures to 15 pin D-Sub "INTERFACE" connector.

## CHILLER MODULE OPTIONS

### K-O Concepts Model DMC-G2 (-14/-20)

#### Optional Accessories

Optional DIO (Digital In/Out)  
Model: DIO-LCR-1420



Optional includes two digital outputs from the temperature controller. Outputs provide status of process coolant flow and coolant level switches via data stream.

Optional DIO Contact Closures  
Model: DIO-LCR-1420-V



Image shown does not represent part number, please see documents for further detail.

Option provides DIO (Digital Input/Output) signals (24 VDC switched voltage typical per signal / 750mW per contact) to the 15 pin D connector via the End User Board conversion. DIO's are used to energize devices such as buzzers, horns, cameras, and lights.

Optional DIO Contact Closures  
Model: DIO-LCR-1420-C

DIO signals are output to the 15 pin D connector as contact closures.

Optional Operator Terminal  
Model: OT-7 or OT-10



With the remote touch-screen operator terminal you can monitor Time vs. Temperature via a chart, view Analog Input as a bar graph, monitor the position of the valve / amount of cool power via a meter and animation, change analog input calibration offset and set point, monitor DIO values, and initiate a user restore via drop down menu.

Package Includes: 7" or 10" Silver Series Interface, Power Supply, Input: 85-264VAC, Output: 24VDC, 1.1A, 25W, 5-foot communication cable OIT COM1 (2-wire RS-485) to 9 Pin Sub D Male Connector w/ Shell, Pre-Installed Protective Screen, and Resistive Stylus

OIT-7 and OIT-10 are both 800 x 480 dpi.  
OIT-7 16 million colors / OIT-10 262 thousand colors  
OIT-7 and OIT-10 are 4 wire analog resistive screens.  
OIT-7: 7.88W x 5.76H x 1.34D in.  
OIT-10: 10.67W x 8.38H x 1.57D in.

Optional SpecView Software (Mini Version)  
Model: SVMsb-0000-0000

#### SPECVIEW



SpecView gives customers the ability to remotely set the set point, see temperature alarms, monitor time vs. temperature, and monitor the state of the RTD. Also includes Color Dynamics and Strategy Controller Option which allows a color to change colors and flash. With added DIO controller option SpecView can monitor flow and level alarms. Watlow's Controller Support Tools come with latest SpecView program. Customers can use software up to 10 minutes in demo mode. Purchase this option directly from Watlow. Single Port Option.

Optional SpecView Software (Mini + Active X)  
Model: SVMsb-0A00-0000

#### SPECVIEW



Same as SVMsb-0000-0000 and also includes graphical Active X controls that allow SpecView to connect to and work with third party software, such as FactorySoft's Symbol Factory. Purchase this option directly from Watlow. Single port option.

**CHILLER MODULE OPTIONS**  
**K-O Concepts Model DMC-G2 (-14/-20)**

**Optional Accessories**

Optional Aerospace & Field Ruggedized  
Model: JIC-SS-1420



Upgraded stainless steel, 37 degree JIC coolant fittings, braided Teflon hoses, stainless steel flow switch, and digital pressure gauge supplied.

Optional Water Connection Kit 1/2"  
Model: WCK-1/2"



Includes two 1/2" Push-to-Connect fittings for chiller back-panel & 12 feet of 1/2" OD LLDPE tubing (BLK).

Optional Casters (4X) w/ Hardware  
Model: CL-4



Option provides casters (4X) and mounting hardware for portability, until unit is ready for rack mounting.

Optional Free Standing Kit  
Model: FSC-DMC



Option converts rack-mount cabinet to free standing chiller w/ casters.

Optional Bypass Valve  
Model: BPV-3/8-SS



Back-panel mounted stainless steel valve body and SS valve allows process coolant, to be bypassed between the supply and return bulkhead fittings. Valve regulates coolant flow to load.

Optional Bypass Valve (Push-to-Connect)  
Model: BPV-3/8-SS-PC



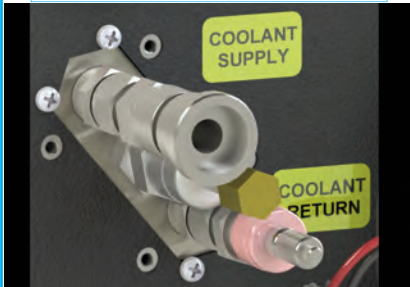
Same as BPV-3/8-SS with (qty 2) external 3/8" O.D. x 3/8" MPT push-to-connect tube fittings.

## CHILLER MODULE OPTIONS

### K-O Concepts Model DMC-G2 (-14/-20)

#### Optional Accessories

Optional Bypass Valve (Quick-Disconnect)  
Model: BPV-3/8-SS-QD



Same as BPV-3/8-SS with Quick-Disconnect external fittings. Includes male and female valved, quick-disconnect fittings. Also includes mating quick disconnect fitting w/ 3/8" compression connections to customer tubing. See model 3/8-QD option.

Optional Quick Disconnect Fitting Kit  
Model: 3/8-QD



Option provides male and female valved, quick-disconnect fittings. Also includes mating quick-disconnect fitting w/ 3/8" compression connections to customer tubing.

Optional PAO Compatibility & Test  
Model: PAO-C/T



PAO Compatibility & Test Option includes custom seals & materials for PAO coolant. Includes upgraded, high-pressure plumbing, chiller testing with MIL-PRF-87252C, PAO coolant, digital coolant pressure gauge, stainless steel, 37 degree JIC coolant fittings, stainless steel flow switch, and braided Teflon hoses.

Optional Filter / Flow Meter Assembly  
Model: PAO-FF



Option includes fuel filter / water separator assembly with a spare filter element, and a 0-8 GPM digital coolant flow sensor. The digital flow sensor is not in contact with the coolant and operates over a greater range. Percent of Full Scale with response time of 0.5sec is 2.0%. Assembly is mounted on a separate rack panel. Assembly is plumbed to the chiller if the unit is not free-standing.

Optional Filter Assembly  
Model: PAO-FILT



Option includes fuel filter with a spare filter element. Assembly is mounted on a separate rack panel.



**CHILLER MODULE OPTIONS**  
**K-O Concepts Model DMC-G2 (-14/-20)**

---

**Optional Accessories**

Poppet Valve 1/2"  
Model: PRV-1/2-50

Coolant pressure relief valve allows the chiller's coolant to be bypassed when the pressure rises to 50 PSI. The feature prevents the coolant pump from being operated at deadhead pressure. Settable from 50-150 PSI.

Optional Elapsed Time Meter  
Model: ETM

Non Resettable Elapsed Time Meter with internal 8 year battery. Meter is mounted on the back panel. Meter uses vibration to log chiller run-time for maintenance schedule.

Optional JIC 9/16"-18 Fittings  
Model: JIC-3/8



Includes two stainless steel 3/8" NPT to JIC fittings for chiller back panel coolant supply and return.

Optional Coated Condenser Coil  
Model: CCC

Option provides coating to protect condenser coil from harsh ambient air environment.

Optional Insulation Package  
Model: INSUL-PKG-1420

For applications where coolant set temperature is below dew point. Insulation applied to process coolant tank, pump head, and coolant lines. Pump motor is encapsulated.

## CHILLER MODULE OPTIONS

### K-O Concepts Model DMC-G2 (-14/-20)

#### Optional Accessories

Optional 1.0 GPM Large Orifice Flow Switch  
Model: FS-1.0-S

Optional large orifice coolant flow switch to reduce coolant pressure with high flow coolant values.

Optional 2.0 GPM Large Orifice Flow Switch  
Model: FS-2.0-S

Optional large orifice coolant flow switch to reduce coolant pressure with high flow coolant values.

Optional High Flow PDM Pump  
Model: PDM-6-16-1420

Optional high flow PDM pump for high pressure applications. Includes upgrade to large orifice flow switch (straight or right angle). Supplies 1.5 - 4.4 GPM (5.8 - 16.5 LPM) of coolant at up to 59psi / 4 bar of available pressure. Coolant flow rates available in 7 increments via dip switch selection. Used for aqueous coolant or PAO oil. Upgraded discharge lines also included.

Optional RD Pump  
Model: NRD-08TV-24

Optional centrifugal water pump for low pressure applications. Includes 30 watt 24 VDC power supply and plumbing. Deadhead pressure at 16psi. Supplies 0.5 - 1.5 GPM (1.9 - 5.7 LPM) depending on system pressure.

Optional Rack-Mount Conversion  
Model: RMC-DMC

Option for customers with free standing DMC-14/20's that want to convert their unit to a rack-mount unit. Includes 1 top panel, 2 rack mount ears, and hardware.

Optional Cable Assembly, Series Interface  
Model: CBL-SER-INT



Optional 15pin D interface signal cable to provide interlock signals wired in series & remote energize input.

## CHILLER MODULE OPTIONS

### K-O Concepts Model DMC-G2 (-14/-20)

#### Optional Accessories

Optional Cable Assembly, Interface  
Model: CBL-INT



Optional 15pin D interface signal cable to provide interlock outputs, RTD output & remote energize input.

Optional AC Mains 115V  
Model: ACMains-115

Provides chiller with 115VAC / 60Hz / 1Ø power mains. Optional 115VAC 60Hz compressor.

Optional AC Mains 230V  
Model: ACMains-230

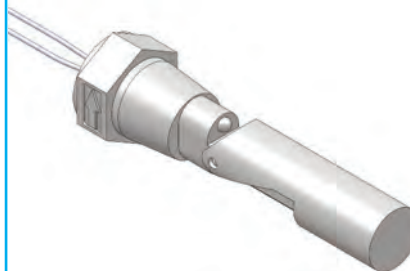
Provides chiller with 230VAC / 50/60Hz / 1Ø power mains. Optional 230VAC 50/60Hz compressor.

Optional Push-to-Connect Fittings  
Model: P-C-1/2



Includes two 1/2" Push-to-Connect fittings for chiller back-panel.

Optional Second Level Switch  
Model: LVL-SW2



Option second level switch tied into interface connector (DB15). The level switch can also be tied into the optional EU-PCB.

Optional Digital Pressure Gauge  
Model: DPG



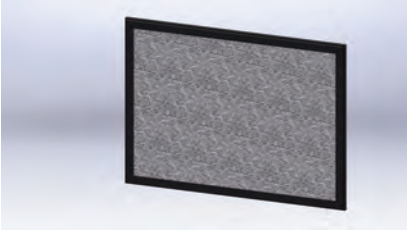
The transducer operates from 0-145psi and has a 0.25% BFSL accuracy rating. The transducer has all stainless steel parts with no o-rings. The controller displays "in-range" pressure values in green and "out-of-range" pressure values in red.

## CHILLER MODULE REPLACEMENTS

### K-O Concepts Model DMC-G2 (-14/-20)

#### Replacement Parts

Replacement Air Filter  
Model: 26010845



Filters ambient air to maintain efficiency of condenser coil.

Replacement DI Cartridge  
Model: SB-0500



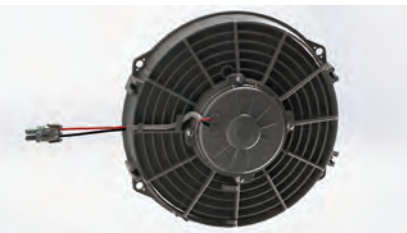
Replacement mixed-bed ion cartridge for dionizer canister.

Replacement Filter Element  
Model: P5-478



Replacement 5 micron filter element for FILT-5 assembly.

Replacement Fan  
Model: 60332002 / 60332006



Optional replacement fan for DMC-14/20 units.

Replacement 0-30psi Gauge Brass  
Model: 0-30-B



Replacement 0-30psi pressure gauge. Gauge is 316 stainless steel and connection fittings are brass.

Replacement 0-160psi Gauge Brass  
Model: 0-160-B



Replacement 0-160psi pressure gauge. Gauge is 316 stainless steel and connection fittings are brass.

## CHILLER MODULE REPLACEMENTS K-O Concepts Model DMC-G2 (-14/-20)

---

### Replacement Parts

Replacement 0-30psi Gauge SS  
Model: 0-30-SS



Replacement 0-30psi pressure gauge. Gauge and connection fittings are 316 stainless steel.

Replacement 0-160psi Gauge SS  
Model: 0-160-SS



Replacement 0-160psi pressure gauge. Gauge and connection fittings are 316 stainless steel.

Replacement PDM Pump  
Model: PDM-3-10-1420

Replacement PDM pump with fittings.

Replacement High Flow Pump  
Model: PDM-6-16-1420

Replacement High Flow PDM pump with fittings.

Replacement Encapsulated PDM Pump  
Model: PDM-E-3-10-1420

Replacement encapsulated PDM pump for units with a insulation package. Comes with insulation around pump head.

Replacement PDM Pump  
Model: PDM-E-6-16-1420

Replacement encapsulated PDM pump for units with a insulation package. Comes with insulation around pump head.

**CHILLER MODULE REPLACEMENTS**  
**K-O Concepts Model DMC-G2 (-14/-20)**

---

**Replacement Parts**

Replacement RD Pump  
Model: NRD-08TV-24

Replacement centrifugal water pump. Includes 30 watt 24 VDC power supply and plumbing.

Replacement Pump Controller 115V  
Model: CONT-115V

Pump controller replacement for 115V DMC's. Power cable included.

Replacement Pump Controller 230V  
Model: CONT-230V

Pump controller replacement for 230V DMC's. Power cable included.

Replacement Magnetic Drive Pump  
Model: MD-70

Replacement MD-70 pump for DMC-14/-20-MAX units.

**K-O Concepts, Incorporated**  
4375 South Street  
Titusville, Florida, 32780  
Phone: 407/296-7788  
E-Mail: Sales@K-OConcepts • Web: www.K-OConcepts.com

