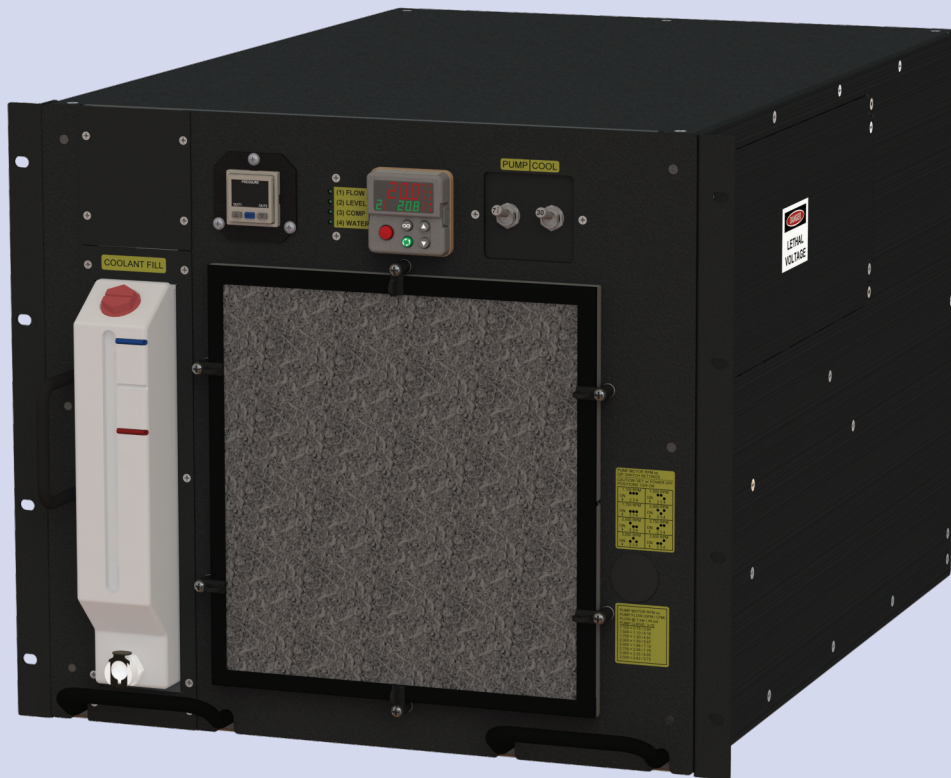




DMC-15/-20-DC

Optional Accessories & Replacement Parts

Front Panel



Back Panel



CHILLER MODULE OPTIONS
K-O Concepts Model DMC-15/-20-DC

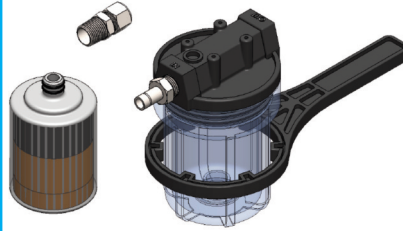
Optional Accessories

Coolant Filter Assembly
Model: FILT-6-1/2



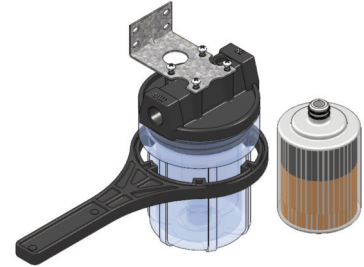
In-line filter cartridge to filter process water and protect water pump. Filter has molded 3/8" FPT fittings at each end and (qty 2) 3/8" MPT x 1/2" Tube Push-to-Connect fittings. Filter limited to 1-1/2 GPM max flow.

DI Assembly
Model: DI-5-1/2-SS-1520



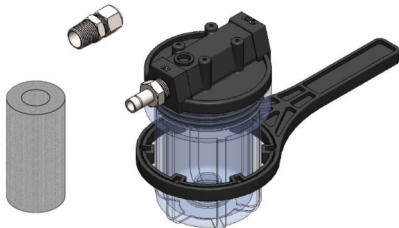
Option includes cartridge style water filter. Includes service wrench.

DI Assembly w/ Bracket
Model: DI-5-1/2-BRKT-1520



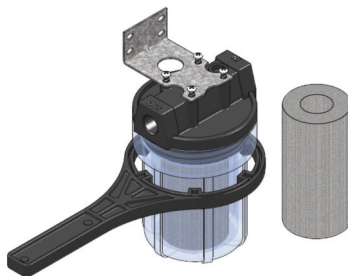
Same as DI-5-1/2-SS with optional bracket. Includes service wrench.

Coolant Filter Assembly
Model: FILT-5-1/2-SS



Canister style filter cartridge to filter process water and protect water pump. This option includes a back-panel-mounted particle filter assembly comprised of a canister style filter w/ fittings for installation onto chiller back panel, and a spare replacement filter element (P5-478). Includes service wrench.

Coolant Filter Assembly
Model: FILT-5-1/2-BRKT



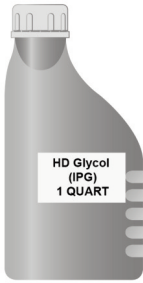
Same as FILT-5-1/2 with optional bracket. Includes service wrench.

CHILLER MODULE OPTIONS

K-O Concepts Model DMC-15/-20-DC

Optional Accessories

1 Quart of HD Glycol
Model: IPG-(HD)-1qt.



Commonly called HD IPG. One quart bottle. DOWFROST HD fluid features a higher maximum operating temperature, higher reserve alkalinity and greater thermal stability for longer fluid life. Extra-strength corrosion inhibitors in DOWFROST HD fluid are formulated for high temperature use, resulting in reduced maintenance and longer inhibitor life in most applications.

1 Gallon of HD Glycol
Model: IPG-(HD)-1gal.



Commonly called HD IPG. One gallon bottle. DOWFROST HD fluid features a higher maximum operating temperature, higher reserve alkalinity and greater thermal stability for longer fluid life. Extra-strength corrosion inhibitors in DOWFROST HD fluid are formulated for high temperature use, resulting in reduced maintenance and longer inhibitor life in most applications.

1 Gallon of Mixed HD Glycol
Model: IPG-(HD)-30/70-1gal.



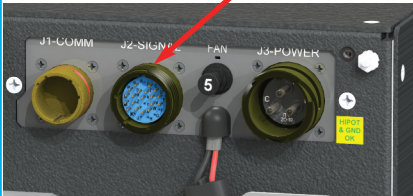
Commonly called HD IPG. One gallon bottle. Pre-mixed coolant with 30% IPG & 70% deionized water. DOWFROST HD fluid features a higher maximum operating temperature, higher reserve alkalinity and greater thermal stability for longer fluid life. Extra-strength corrosion inhibitors in DOWFROST HD fluid are formulated for high temperature use, resulting in reduced maintenance and longer inhibitor life in most applications.

CHILLER MODULE OPTIONS

K-O Concepts Model DMC-15/-20-DC

Optional Accessories

Modbus RTU Communications
Model: 485 or 232-MODBUS RTU



Option provides communications via the digital temperature controller. Modbus RTU / RS-485 or 232 format allows for communications via external computer or network. A Modbus Gateway or Modbus RTU communications card is required for interface.

Modbus TCP Communication
Model: TCP



Option provides communications via the digital temperature controller. Modbus TCP / Ethernet format allows for communications via network computer. This format is supplied via rear panel CAT 6 female port.

USB 2.0 Communication
Model: USB2.0



Option provides communication via the digital temperature controller. USB 2.0 format allows communications via local computer. This format is supplied via rear-panel USB B female connector.

RS-232 Communication
Model: RS-232



Option provides communications via the digital temperature controller. EIA-232 format allows for communications via local computer. EIA-485 is output from the temperature controller & converted via internal module to a RS-232 format.

Profibus DP Communications
Model: PROFIBUS DP



Option provides communications via the digital temperature controller. Profibus DP format allows for communications via external computer or network. A Profibus Gateway or Profibus communications card is required for interface.

Device Net Communication
Model: DEVICE NET

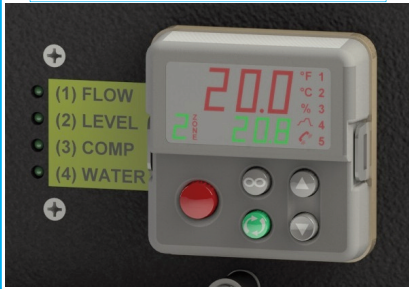


Option provides communications via the digital temperature controller. Device Net format allows for communications via external computer or network. A Device Net Gateway or Device Net communications card is required for interface. Cable 3082A supplied and routed to optional communications panel. Customer must supply connector.

CHILLER MODULE OPTIONS
K-O Concepts Model DMC-15/-20-DC

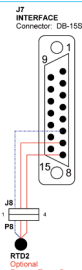
Optional Accessories

End User Board
 Model: EU-PCB-A or S



Front-panel viewed PCB reports status of interface signals via LED's and audible alarm. PCB reports status of coolant flow, coolant level, compressor alarm, and coolant temperature alarm via dual color LED's. Audible alarm sounds on any or all fault signals. Order option "A" for alarms only or option "S" for alarms and shut down

RTD Output
 Model: TS-RTD



Sensor is 100Ω, 3 wire platinum RTD & located in coolant tank. Connector output located on back panel. Sensor provides redundant sensing of coolant temperature.

Remote Energize
 Model: SSR-REMOTE-DC



Option allows user to power chiller ON or OFF via internally installed SSR. Customer supplies remote 3-32 VDC input to energize chiller.

SpecView Software (Mini Version)
 Model: SVMSB-0000-0000



SpecView gives customers the ability to remotely set the set point, see temperature alarms, monitor time vs. temperature, and monitor the state of the RTD. Also includes Color Dynamics and Strategy Controller Option which allows a color to change colors and flash. With added DIO controller option SpecView can monitor flow and level alarms. Watlow's Controller Support Tools come with latest SpecView program. Customers can use software up to 10 minutes in demo mode. Purchase this option directly from Watlow. Single Port Option.

SpecView Software (Mini + Active X)
 Model: SVMSB-0A00-0000



Same as SVMSB-0000-0000 and also includes graphical Active X controls that allow SpecView to connect to and work with third party software, such as FactorySoft's Symbol Factory. Purchase this option directly from Watlow. Single port option.

CHILLER MODULE OPTIONS

K-O Concepts Model DMC-15/-20-DC

Optional Accessories

Casters (4X) w/ Hardware
Model: CL-4



Option provides casters (4X) and mounting hardware for portability, until unit is ready for rack mounting.

Internal Bypass Valve
Model: BPV-1/2-SS



Back-panel mounted nickel plated (DI compatible) valve body and stainless steel valve allows process coolant, to be bypassed between the supply and return bulkhead fittings. Valve regulates coolant flow to load.

Bypass Valve (Push-to-Connect)
Model: BPV-1/2-JIC

Same as BPV-1/2 with (qty 2) external 1/2" JIC x 1/2" MPT male adapters.

Bypass Valve (Quick-Disconnect)
Model: BPV-1/2-SS-QD



Same as BPV-1/2 with Quick-Disconnect external fittings. Includes male and female valved, quick-disconnect fittings. Also includes mating quick disconnect fitting w/ 1/2" compression connections to customer tubing. See model 1/2-QD option.

Quick Disconnect Fitting Kit
Model: 1/2-QD



Option provides male and female valved, quick-disconnect fittings. Also includes mating quick-disconnect fitting w/ 1/2" compression connections to customer tubing.

CHILLER MODULE OPTIONS

K-O Concepts Model DMC-15/-20-DC

Optional Accessories

DIO (Digital In/Out)
Model: DIO-1520-30



Optional includes six digital outputs from the temperature controller. Outputs provide status of process coolant flow, coolant level (2), process water, compressor overtemp, and digital pressure gauge alarm switches via data stream.

End User Board - Alarm Only
Model: EU-PCB-A-C

Option provides closed contact DIO (Digital Input/Output) signals to the 15 pin D connector via the End User Board conversion. (Option is available only if EU-PCB-A is purchased).

End User Board - Alarm Only
Model: EU-PCB-A-V



Image shown does not represent part number, please see documents for further detail

Option provides DIO (Digital Input/Output) signals (24 VDC switched voltage typical per signal / 750mW per contact) to the 15 pin D connector via the End User Board conversion. DIO's are used to energize devices such as buzzers, horns, cameras, and lights.

CHILLER MODULE OPTIONS

K-O Concepts Model DMC-15/-20-DC

Optional Accessories

PAO Compatibility & Test
Model: PAO-C/T-1520



Option includes special sealing and preparation for Royco 602™ / PAO coolant. Operation also includes chiller testing with Royco 602™ / PAO coolant.

Filter / Flow Meter Assembly
Model: PAO-FF



Option includes fuel filter / water separator assembly with a spare filter element, and a 0-1 GPM coolant flow meter. Assembly is mounted on a separate rack panel. Assembly is plumbed to the chiller if the unit is not free-standing.

Optional Filter
Model: PAO-FILT

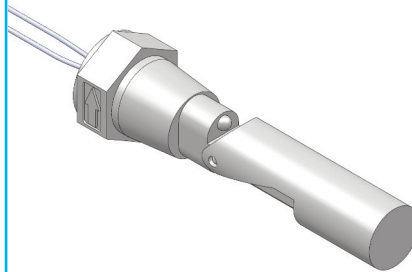


Option includes fuel filter with a spare filter element. Assembly is mounted on a separate rack panel.

Insulation Package
Model: INSUL-PKG-1520

For applications where coolant set temperature is below dew point. Insulation applied to process coolant tank, pump head, and coolant lines. Pump motor is encapsulated.

Optional 2nd Level Switch
Model: LVL-SW2-1520



Option second level switch tied into interface connector (DB15). The level switch can also be tied into the optional EU-PCB.

CHILLER MODULE OPTIONS
K-O Concepts Model DMC-15/-20-DC

Optional Accessories

Optional PDM Pump
Model: PDM-E-INV

Optional encapsulated positive displacement style process water pump with eight (8) speed settings and a power inverter for VDC power. Supplies flow from 3-10 liters a minute @ 70 psi (4.8 bar) available pressure.

Optional Coolant Connection Kit
Model: CCK



Includes two stainless steel 1/2" NPT to JIC fittings for chiller back-panel

CHILLER MODULE OPTIONS
K-O Concepts Model DMC-15/-20-DC

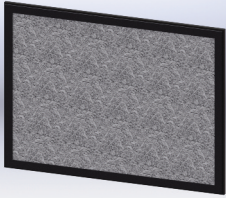
Optional Accessories

CHILLER MODULE REPLACEMENTS

K-O Concepts Model DMC-15/-20-DC

Replacement Parts

Replacement Air Filter
Model: AF-9



Filters ambient air to maintain efficiency of condenser coil.

Replacement DI Cartridge
Model: SB-0500



Replacement mixed-bed ion cartridge for dionizer canister.

Replacement Filter Element
Model: P5-478



Replacement 5 micron filter element for FILT-5 assembly.

Replacement Fan
Model: 60331811



Optional replacement fan for DMC-15/-20-DC units.

Replacement 0-30psi Gauge SS
Model: 0-30-SS



Replacement 0-30psi pressure gauge. Gauge and connection fittings are 316 stainless steel.

Replacement 0-160psi Gauge SS
Model: 0-160-SS



Replacement 0-160psi pressure gauge. Gauge and connection fittings are 316 stainless steel.

CHILLER MODULE REPLACEMENTS
K-O Concepts Model DMC-15/-20-DC

Replacement Parts

Replacement PDM Pump
Model: PDM-E-1520

Replacement PDM-E pump
with fittings.

Replacement MD Pump
Model: MD-DC

Replacement MD-DC pump
with fittings.

Replacement Pump Controller 115V
Model: CONT-115V

Pump controller
replacement for 115V
DMC's. Power cable
included.

**CHILLER MODULE REPLACEMENTS
K-O Concepts Model DMC-15/-20-DC**

Replacement Parts

K-O Concepts, Incorporated
4375 South Street
Titusville, Florida, 32780
Phone: 407/296-7788
E-Mail: Sales@K-OConcepts.com • Web: www.K-OConcepts.com

